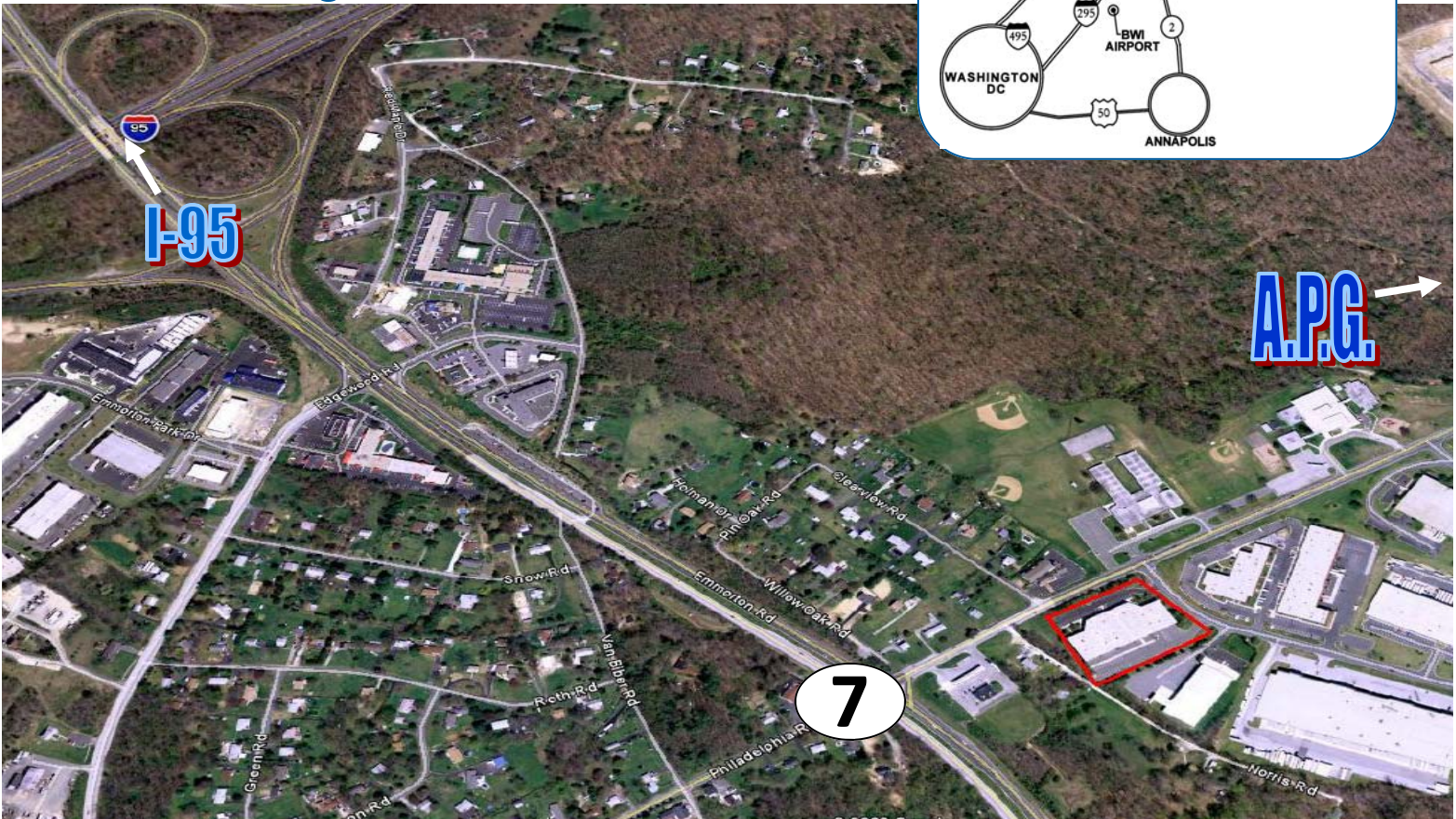
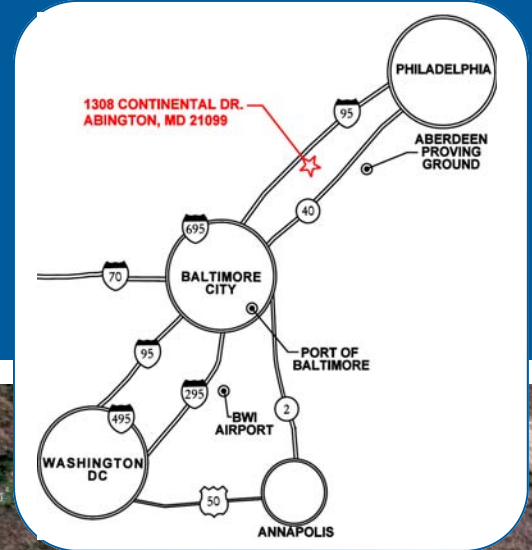


# 35,580 Square Feet Available Feb 1st, 2010



*1308 Continental Drive  
Abingdon, MD 21009*

- 1 mile to I-95
- 9 miles to Aberdeen Proving Ground
- 13 miles to I-695
- 20 miles to the Port of Baltimore
- 34 miles to BWI Airport



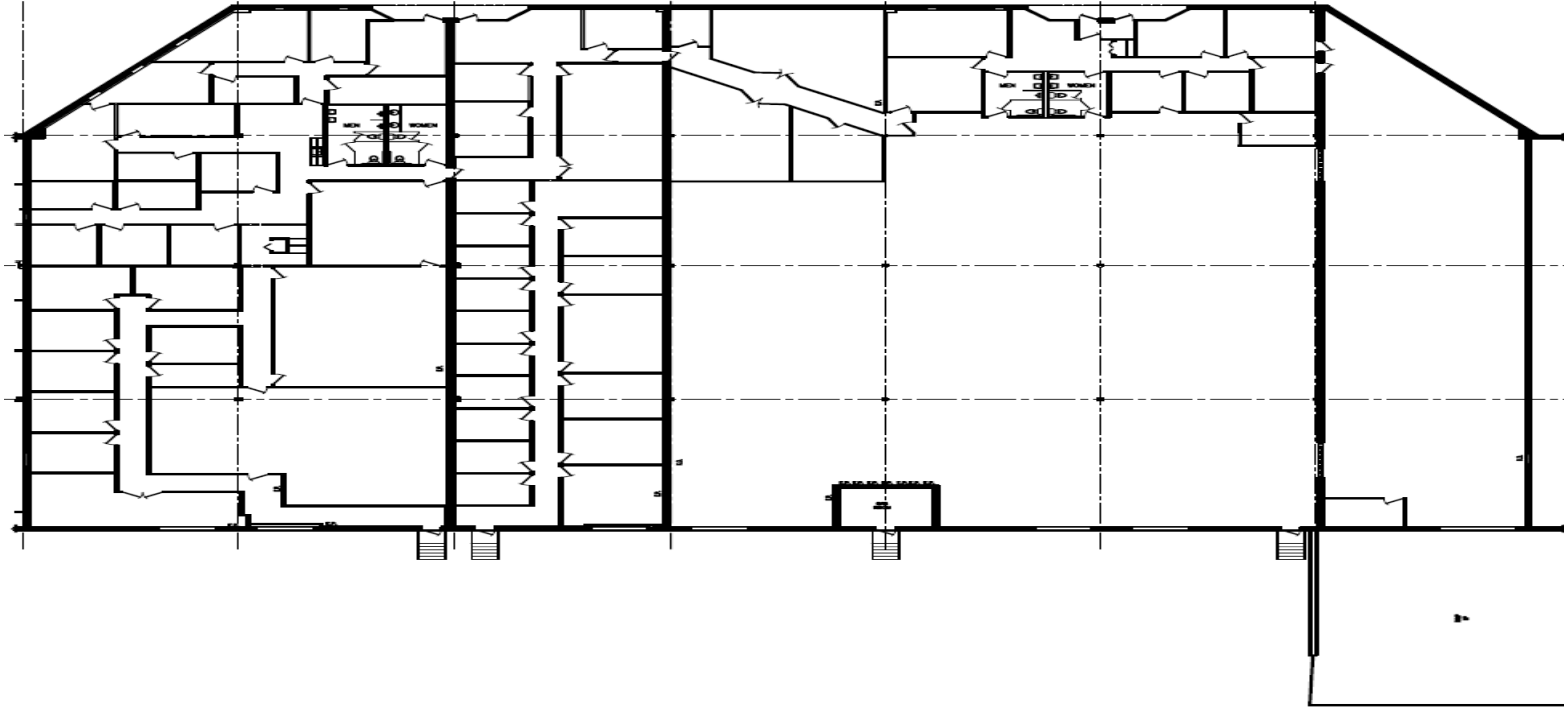
Taylor J. Fields  
Commercial Leasing Representative  
443-689-8027 Direct | 443-844-9369 Mobile  
TFields@JFKnott.com

Ryan D. Burrows  
Commercial Leasing Representative  
443-689-8023 Direct | 410-404-0449 Mobile  
RBurrows@JFKnott.com

## 1308 Continental Drive, Abingdon, MD 21009



- 35,580 SF Available
- 17,930 SF Existing Office
- Located within an Enterprise Zone in Harford County, MD
- 19' Clear Ceiling Height
- Dock & Drive-in Loading
- Gas Heat & Wet Sprinkler
- Convenient Access to A.P.G & I-95



Taylor J. Fields  
Commercial Leasing Representative  
443-689-8027 Direct | 443-844-9369 Mobile  
TFields@JFKnott.com

Ryan D. Burrows  
Commercial Leasing Representative  
443-689-8023 Direct | 410-404-0449 Mobile  
RBurrows@JFKnott.com